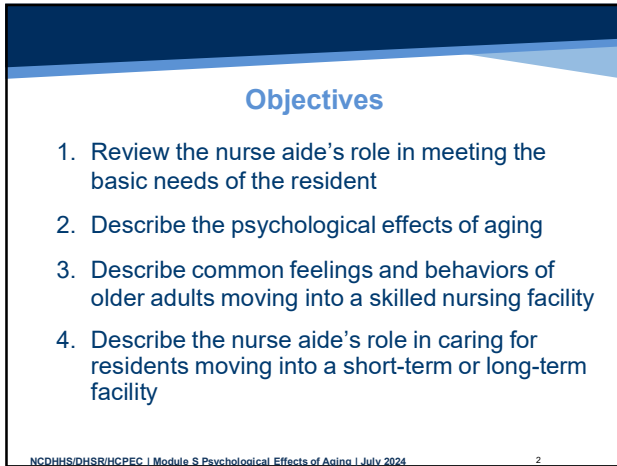


1



2



3

Basic Human Needs

Physiological/Physical, Safety and Security

- Oxygen
- Food and Water
- Shelter and Sleep
- Elimination and Activity
- Intimacy
- Resources for safety and security



NCDHHS/DHSR/HCP/EC | Module 5 Psychological Effects of Aging | July 2024

4

4

Psychological Needs

Love and Belonging, and Self- Esteem

- Friendship
- Social acceptance
- Value, worth, or opinion of self
- Being well thought of by others
- Seeing oneself as useful
- Closeness
- Sense of belonging



NCDHHS/DHSR/HCP/EC | Module 5 Psychological Effects of Aging | July 2024


5

5

Self-Actualization Needs

Self-actualization may be difficult for older adult to achieve due to unmet:

- Physical needs
- Security needs
- Love and affection needs
- Self-esteem needs



6

6

Psychological Effects of Aging

Exploration of

- Feelings
- Emotional stress
- Physical adjustments
- Psychosocial needs
- Psychological adjustments



NCDHHS/DHSR/HCPEC | Module S Psychological Effects of Aging | July 2024

7

Developmental Tasks of Aging

Late adulthood tasks include:

- Adjustment to retirement, potential reduced income, death of friends, death of spouse, physical changes, loss of independence
- Creating new friendships and relationships
- Loss of vitality
- Integrating life experiences
- Preparation for one's demise



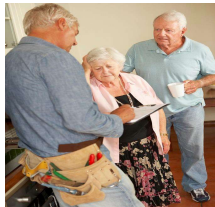
NCDHHS/DHSR/HCPEC | Module S Psychological Effects of Aging | July 2024

8

8

Developmental Issues of Aging

- Amount and cost of care
- Nutritional needs
- Relationships
- Location of support system
- Medical care needs
- Changes in lifestyle
- Long-term care decisions



NCDHHS/DHSR/HCPEC | Module S Psychological Effects of Aging | July 2024

8

9

The Place I Call Home



10

The Home of an Older Adult

To an older adult, a home may represent:

- Independence
- A link to the past
- A part of his/her identity
- The center for family gatherings
- A connection to the neighborhood
- Symbol of position in the community
- A place to maintain autonomy and control

NCDHHS/DHSR/HCEPC | Module Psychological Effects of Aging | July 2024
11

11

Relocation from the Home

Why might older adults relocate from their homes?

- Decrease in finances
- Decline in physical or mental state
- Inability to manage the home
- Lack of social support
- Increasingly unsafe neighborhood

NCDHHS/DHSR/HCEPC | Module Psychological Effects of Aging | July 2024
12

12

Relocation from the Home (2)

An older adult's reaction to relocation depends upon:

- Degree of choice
- Degree of preparedness
- Degree of sameness of new location
- Degree of predictability
- Number of additional losses

NCDHHS/DHSR/HCPEC | Module Psychological Effects of Aging | July 2024

13

13

HAPPY CARE NURSING HOME



14

Admission to a Skilled Nursing Facility

- How might an older adult feel upon a sudden admission to a skilled nursing facility?
 - Stress, sense of loss, fear, isolation, confusion, being out of control
 - A sense of relief after the move
 - Transitioning of one phase of life and beginning of next phase
- What can the nurse aide do to individualize the admission process?
 - Identify how to address the resident
 - Provide explanation of routines and procedures
 - Introduce resident to staff and other residents

NCDHHS/DHSR/HCPEC | Module Psychological Effects of Aging | July 2024

15

15

Life in a Skilled Nursing Facility

The resident's room and the environment

- Limited for personal belongings
- Reduced in size
- Lack of privacy
- Little to no space for storage
- Fixed routines and schedules



NCDHHS/DHSR/HCPEC | Module S Psychological Effects of Aging | July 2024

17

16

Adapting to Life in a Skilled Nursing Facility

- Resident may live in a shared bedroom with no choice and no control
- Personal routines may conflict with facility schedules
- Cognitively impaired residents may reside with cognitively intact residents
- Residents may be frightened



NCDHHS/DHSR/HCPEC | Module S Psychological Effects of Aging | July 2024

17

17

Adapting to Long Term Care

A cognitively intact older adult may initially adapt to life in a facility by becoming depressed or uncooperative. Others may be determined to make the most of the move.



18

18

Psychological Effects and Coping

A common response to sudden placement into a facility is often viewed as poor adjustment



Staff may unfairly and prematurely label the resident as difficult or a troublemaker

NCDHHS/DHSR/HCPEC | Module Psychological Effects of Aging | July 2024

19

19

Caring for a Skilled Nursing Home Resident

Assist older adult to personalize space

Provide privacy and respect for personal space

Provide emotional support

Provide person-centered care based on preferences and choices

Be consistent and supportive

NCDHHS/DHSR/HCPEC | Module Psychological Effects of Aging | July 2024

20

20

Caring for the Developmentally Delayed Resident

Treat with respect and dignity

Praise positive learned behaviors

Avoid acting as parent

Build self-esteem

NCDHHS/DHSR/HCPEC | Module Psychological Effects of Aging | July 2024

21

21

Caring for the Depressed Resident

RECOGNIZE POTENTIAL CAUSE OR TRIGGERS

RECOGNIZE SIGNS AND SYMPTOMS

RECOGNIZE DEFENSE MECHANISMS

NCDHHS/DHSR/HCPEC | Module 5 Psychological Effects of Aging | July 2024

22

22

Caring for the Stressed Resident

Listen to concerns
Observe and report
Treat with dignity
Attempt to understand
Be honest trustworthy
Never argue
Attempt to locate source
Support efforts to deal with stress

23

23

Caring for the Demanding Resident

Attempt to discover factors responsible for behaviors

Display a caring attitude

Listen to verbal and nonverbal messages

Give consistent care

Spend time with resident

Agree to return at a specific time and keep promise

NCDHHS/DHSR/HCPEC | Module 5 Psychological Effects of Aging | July 2024

24

24

Caring for the Agitated Resident

- Encourage the resident express feelings verbally
- Remind resident of past accomplishments
- Encouraged the resident to ask questions
- Encourage activities that promote self-esteem
- Observe for safety concerns
- Assign small tasks
- Use reality orientation

NCDHHS/DHSR/HCPEC | Module S Psychological Effects of Aging | July 2024

25

25

Caring for the Paranoid Resident

- Treasure resident of safe environment
- Realize behavior is based on fear
- Avoid agreeing or disagreeing with comments
- Provide a calm environment
- Involve in one-on one activities

NCDHHS/DHSR/HCPEC | Module S Psychological Effects of Aging | July 2024

26

26

Caring for the Combative Resident

- Display a calm demeanor
- Avoid touching the resident
- Provide privacy for a resident displaying safety concerns
- Secure help if necessary
- Do not ignore threats
- Protect from harm
- Listen to verbal aggression with out argument

NCDHHS/DHSR/HCPEC | Module S Psychological Effects of Aging | July 2024

27

27

Omnibus Budget Reconciliation Act (OBRA)

- The federal regulation of skilled nursing facilities focuses on quality of life for residents and emphasizes their individual rights as residents
- Because of OBRA, short- and long-term care residents are more empowered and have a greater say in their own quality of life

NCDHHS/DHSR/HCPEC | Module 5 Psychological Effects of Aging | July 2024

28

28

Psychological Changes and the Aging Adult



NCDHHS/DHSR/HCPEC | Module 5 Psychological Effects of Aging | July 2024

29

29

The End

NCDHHS/DHSR/HCPEC | Module 5 Psychological Effects of Aging | July 2024

30

30
